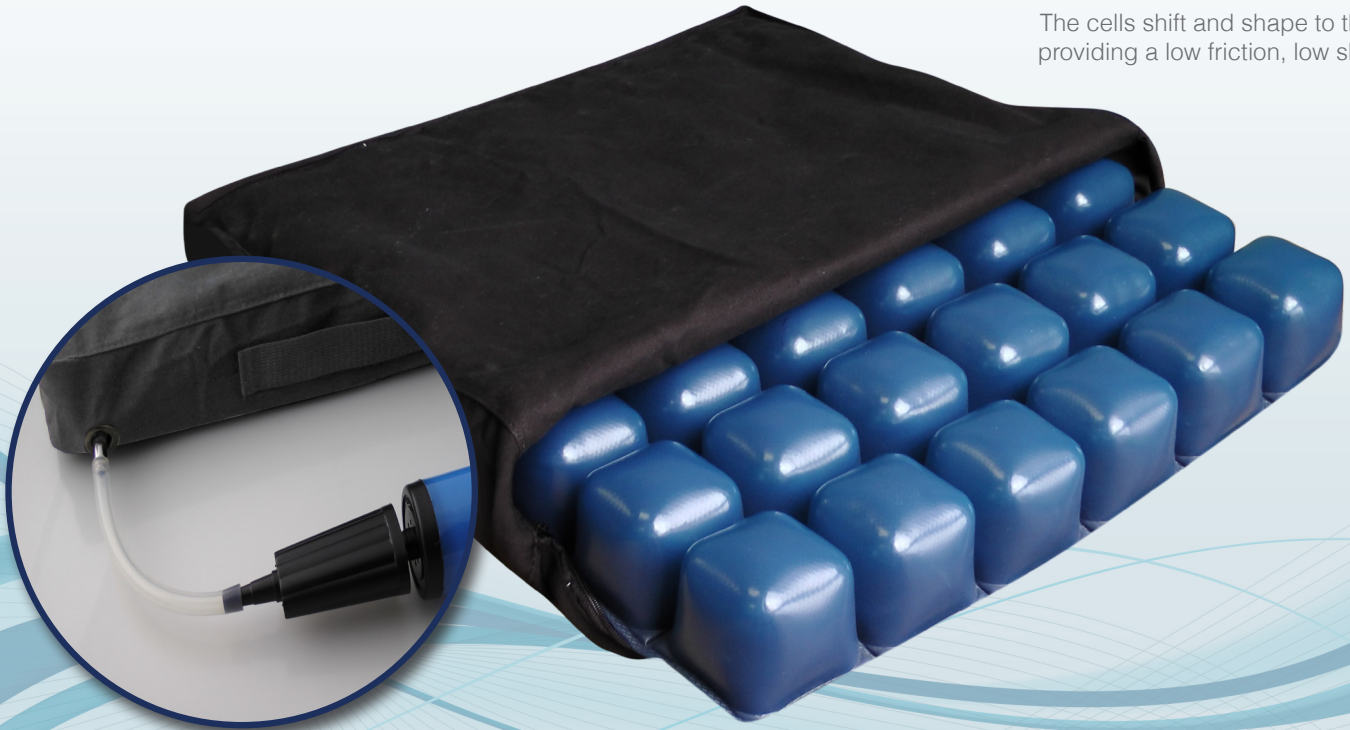


Freedom Ease Cushion Series

The Freedom Ease Cushion Series offers a therapeutic cushioning design, constructed of independent flexible interconnected air cells, dispersing pressure evenly to increase blood flow and assist in the treatment and prevention of pressure ulcers.

The cells shift and shape to the seat area providing a low friction, low shear surface



Easy to use pump makes cushion inflation quick and simple providing maximum comfort and support

FEATURES OF THE FREEDOM EASE CUSHION SERIES

Flexible 2-inch interconnected independent air cells allow for variable patient immersion into the cushion, providing consistent low pressure and an increased blood supply necessary for healthy tissue maintenance.

- The water resistant breathable cover provides a cool, comfortable seating environment
- Machine washable cover has non-slip coating on bottom to prevent sliding
- Multi-cellular, air-filled design allows for adjustments and a personalized fit
- Facilitates blood flow by fitting and conforming to an individual's shape

AVAILABLE IN 3 SIZES

Model	Height (inches)	Dimension (inches)	Number of Cells	Material
6406-09-A	2"	16" x 16"	6 x 6	PVC
6406-09-B	2"	18" x 16"	7 x 6	PVC
6406-09-C	2"	18" x 18"	7 x 7	PVC

SPECS

- Includes air injection hose, hand-held pump, inflation valve, and cushion cover
- Weight capacity: 250 lbs.
- Medicare HCPCS Code: E2622