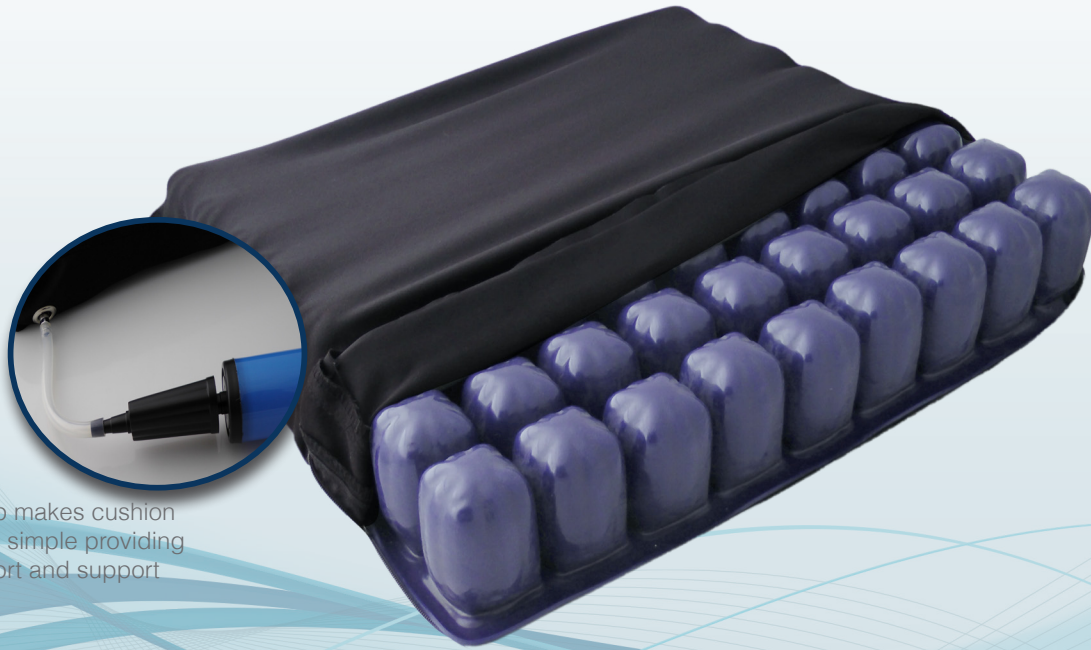




Forever Plus Cushion Series

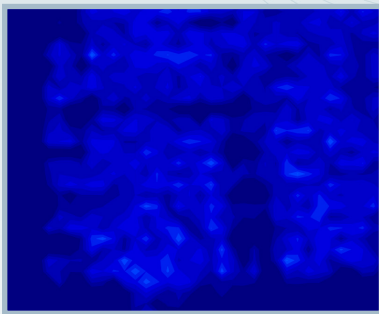
The Forever Plus Cushion Series offers a therapeutic cushioning design, constructed of independent flexible interconnected air cells, dispersing pressure evenly to increase blood flow and assist in the treatment and prevention of pressure ulcers.

The cells shift and shape to the seat area providing a low friction, low shear surface

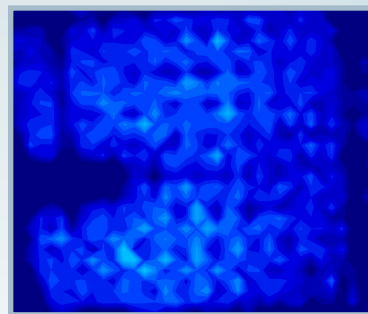


Easy to use pump makes cushion inflation quick and simple providing maximum comfort and support

Forever Plus Cushion vs. The Leading Brand's Cushion



VS



Forever Plus Cushion

Leading Brand's Cushion

E2622 / E2623	_____	HCPCS	_____	E2622 / E2623
22-24 mmHg	_____	Pressure Mapping*	_____	30-34 mmHg
Neoprene	_____	Cell Material	_____	Neoprene
Yes	_____	Cover Available	_____	Yes
Yes	_____	Cover Washable	_____	Yes
Yes	_____	Hand Pump	_____	Yes
Yes	_____	Multiple Patient Use	_____	Yes
\$185	_____	Distributor Price	_____	N/A

*Pressure mapping performed with X-Sensor Pressure Mapping System. Measures over 1600 points. The goal of objective testing for pressure reduction is to keep average pressure less than 32mmHg.



1-866-551-2580